



# The Oregon Grapevine

2017-2018 March, Issue 4

## From your President



Jill Rankin

We had a great time at Winter Meeting, and we were able to get everyone off on their way Sunday before the storm was to hit (which is always good).

One of our guest speakers was Lizz Duhn, a junior at Oregon State University. She told us her inspiring story about her diagnosis of a genetic mutation known as GATA-2 which is linked to multiple cancers. After diagnosis in August 2013, Lizz and her mom moved to Seattle where Lizz received chemo and a bone marrow transplant. The transplant was January 15, 2014. She definitely had some setbacks and things didn't always go as planned, but she made it and has been doing wonderfully ever since.

Our other guests were Anne O'Malley and Neena Nuhring from Easter Seals. Anne, gave a wonderful talk about how Easter Seals started and where they are today. They have several new programs. One of them is designed to help homeless Veterans get into a home and to help retrain them so that they can go out into the work world.

During dinner, Anne and Neena, along with some other gals from Easter Seals, handed out envelopes for donations from all of us. They raised \$1,510 from all of us ESA gals and guys. Way to go Oregon ESA!

Anne and Neena, also lead the evening event, which consisted of a trivia quiz on what Anne had talked about earlier in the day. I think 15 questions and I think the person with the highest correct answers was Kaycee Headley with seven correct answers. They also did a "minute to win it" game and every one had fun playing this.

They had so much fun with our group that they want to come to our State Convention, any District Meetings, and chapter meetings so they can to help ESA and Easter Seals be better partners.

I have been very busy running two households since Winter Meeting. My new grandson went to Legacy Emanuel Children's Hospital the next day (February 19) he has RSV and cannot push the CO<sub>2</sub> out of his lungs. He has been there ever since, with his parents taking turns staying there with him. So I have been busy with taking care of our granddaughters and trying to keep their house duties up along with

my own house duties. So my grandson still needs all of your prayers and thoughts. Don't forget to send in your registration for our State Convention in April. I can't wait to see all of you there.

**Jill Rankin**  
ESA Oregon State President  
(541) 223-1463 - rankin99@comcast.net  
650 Baker St. - Lebanon, OR 97355



### **Oregon State's 2017-2018 Board of Officers**

Left to right: Workshop Chair Barbara Moss, Treasurer Linda Gratteri, Recording Secretary Debbie Sanguras, 1st Vice President Nancy Reed, President Jill Rankin, Kaycee Headley Corresponding Secretary, Ann Choate 2nd Vice President, and Lani Shimer Jr. Past President



### **From your 1<sup>st</sup> Vice President**

Since December, I have been finalizing the trip to Colorado in March for IC Leadership. Sister Barb will be attending also. It will be so nice to have her along to show me the ropes and to hang out with. She has already been a big help.

We just had a wonderful Winter Meeting in Lebanon. Thanks to Omega Mu for putting on such a great meeting. Boulder Falls Inn has some of the friendliest staff and the greatest service ever. It was really nice having the Easter Seals representation there and the games on Saturday night were too much fun. I don't know when I've laughed that hard. Barb's workshop presenter, Lizz Duhn, was excellent. What an amazing young lady! She has been through so much and has such insight on what is really important in life.

Chapters are having success with new members, and adding to their membership because of the great projects they do and the fun they have doing them.

Just a reminder. Be sure to get your "Rushing Report" in by April 1st to:  
Nancy Reid, PO Box 504, Burns, OR 97720

I hope to see everyone soon,  
Nancy





Presenting  
Candidates for State Council Board 2018-2019



Oregon State President: Nancy Reid

Beta Omicron, Burns

Nancy joined ESA in 1986.

She is currently our 1st Vice President.

She has held the chapter offices of Parliamentarian, Educational Chair, Corresponding and Recording Secretary, Vice President and President.

District offices held: President, Vice President, Recording/Corresponding Secretary, and Treasurer.

State Council Offices held: 2nd Vice President, Workshop, Corresponding and Recording Secretary, Treasurer, Association of the Arts, Chaplain, Educational Chair, Historian,



1st Vice President: Ann Choate

Beta Omicron, Burns

Ann joined ESA in 1984.

She is currently our 2nd Vice President.

Chapter Offices held: President, Vice President, Recording Secretary, Educational Chair.

District Offices held: President, Vice President, Recording Secretary

State Council offices held: Recording Secretary, Educational Chair,

Contest Chair, Workshop, Association of Arts, Awards, Historian, Balloting, Auditing, Flag Ceremony, Outstanding Member.



2nd Vice President: Marsha Klosterman

Delta Gamma, Florence

Marsha joined ESA in 1989.

She is currently our Education Chair.

Chapter Offices held: President, Vice President, Recording Secretary,

District Offices held: Recording Secretary.

State Council offices held: Recording Secretary (2 terms), Educational Chair,

Why do I want to lead this state someday? Good question. I must have been drinking when I said yes to some pretty persuasive ladies. LOL Actually, I have thought about it before. I have moved and am not living very close to my own chapter now. It is harder to be involved. I so believe in everything ESA stands for, and it just seems natural to put more energy into this level now. And I do love all you crazy ladies. I have made some good friends that put my energy level to shame and I know they will be there to support me.



Recording Secretary: Katie Hobson

Omega Mu, Albany

Katie joined ESA in 2007.

Chapter Offices held: Recording Secretary, Vice President, President.

District Offices held: Vice President, President two terms.

State Offices held: Parliamentarian, Credentials.

I've been a middle school language arts teacher for 22 years. I live with my great husband Jay and four lovely daughters ages 13 - 23.



Coresponding Secretary: Barb Moss

Beta Omicron, Burns

Barb joined ESA in 1999.

She is currently our Workshop Coordinator.

Chapter Offices held: President, Vice President, Recording Secretary (several times).

District Offices held: President, Vice President, Recording Secretary

State Offices held: Recording Secretary - 3 years, State President, 1st Vice President, 2nd Vice President.

She has attended two IC Conventions, 12 State Conventions, and 6 District meetings



Treasurer: Debbie Sanguras

Delta Kappa, Hood River

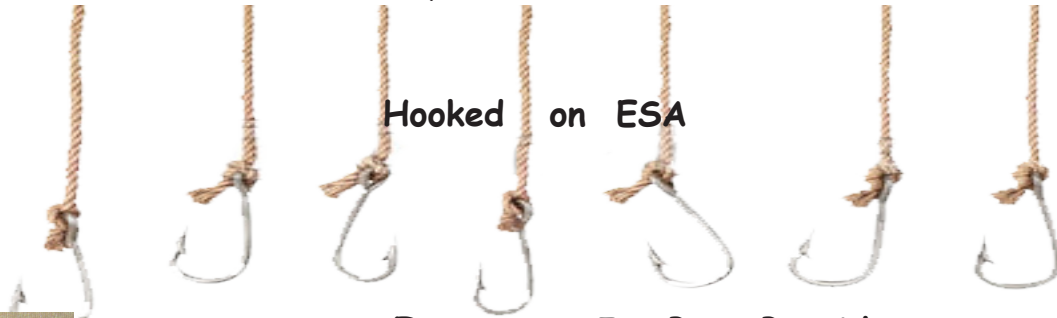
Debbie joined ESA in 1979.

She is currently our Recording Secretary.

Chapter Offices held: All offices (except Treasurer) multiple times.

District Offices held: Vice President, Secretary, and Audit, St. Jude, Easter Seal and Scholarship Chairs.

State Offices held: Workshop Chair, Leadership Chair, Association of Arts, Awards, Chaplain, Easter Seals, Education, Philanthropic, Outstanding Member, and Publicity.



**From your Jr. Past President  
& Disaster Fund Chair**



We have just finished with Winter Meeting and I want to thank everyone who participated in our fundraising efforts.

We netted \$190.00 from the Saran Wrap game. Thank you to Carolyn Warren for coming up with the idea. No thanks to Will Warren,

however, who decided that it would be great fun to see me try to hula hoop while the game was being held. My efforts netted me 1,000 + steps on my FitBit, so I guess it was worth it.

More tickets were sold for an opportunity on the diamond ring. The winning ticket will be drawn at Convention. So, there will still be time to buy more opportunities!! Thank you to all who have already purchased tickets.

I have heard from many chapters who have donated to the Disaster Fund. Please donate as much as you can as the need has surpassed the funds. Through December 2017, claims paid, and expenses were over \$62,000 and income (including \$30,000 from the Morgan Stanley Account) has been \$52,000. As you can see, nationally we are \$10,000 short.

Again, thank you, for your generosity. Who knows where or when another disaster might happen?

Lani Shimer



## From your Chaplain



Hello everyone,  
We have had a slow couple of months.

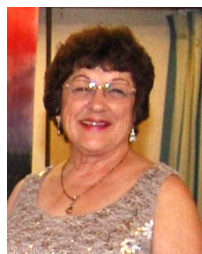
Jenni Dickson's husband, Jeff, is getting better everyday.

Jill Rankin has a new grandson, Axton. We found out today he is at Legacy Emanuel Children's hospital. He is choking and stops breathing. The doctors have taken all kinds of tests to see what is going on with him. So far nothing has been found. But a new round of testing is going on today. She's praying they figure it out this time. He went in first with RSV and unable to push CO2 out of his lungs. Please keep Jill and her family in your prayers and good thoughts. Jill's address is 650 Baker Street Lebanon OR 97355

Please let me know what is going on in your chapter and family. We are here to support you in good times and bad.

Happy Spring  
Leianne

## From your Treasurer



A few reminders as the year is coming to a close:  
State Officers and Chairs:

Please send me any receipts for expenses with an attached Expense Voucher BEFORE APRIL 12, if possible, so that you can be reimbursed and the expense shown on the Financial Report at State Convention.

Any expenses paid after Convention will be shown on next year's Financial Report. Vouchers can be found in Section 3 of your Yearbook, or you can print one from the Oregon State Council website.

Chapter Treasurers:

This is a little early, but good to keep in mind since it comes on the heels of State Convention: According to our State Bylaws, Article XIII - Finance, the annual fee of fifteen dollars per Chapter member shall be paid to the "State Treasurer by May 1 and shall be delinquent by June 15." Please include a copy of your chapter's membership Roster with your payment; and keep in mind that for any new members to be included in your chapter's vote at State meetings, their dues must be paid by the chapter to the State Treasurer at least 21 days prior to State meetings.

All of you were SO GOOD with your dues last summer!

A huge SHOUT OUT AND CONGRATULATIONS!

Linda Gratteri



## From your Educational Chair

Greeting from your educational director. I'm sorry to have missed you at Winter Meeting, but the 70th birthday party was very successful and my house (and I) survived.

I'm hoping for a good statewide turnout of reports come April 1st. If you have any questions, please contact me. I'll make up an answer if I don't know it (or do the research for you).

Marsha Klosterman, State Educational Director  
25626 Hall Road, Junction City, OR 97448



## From your Philanthropic Chair

A few reminders:

1. Reports must be in by April 1st.....no exceptions!
2. Reports MUST be mailed.....no email reports will be accepted!

3. Every report is important.....whether large or small. This affects our non-profit status with IRS.

Questions: Jeri Fine 541/475-2634 or oldfinefolks63@gmail.com

Thanks so much if you're willing to do this. This has been an ongoing problem for months!

Jeri Fine

## From your Circle of Life Sr. Chair

CONGRATULATIONS OREGON STATE!

We won a virtual event banner for the Virtual Team for the 2017 Seattle St. Jude Walk/Run to End Childhood Cancer. We raised \$4,410! We will have the banner to display at all events.



Reminders:

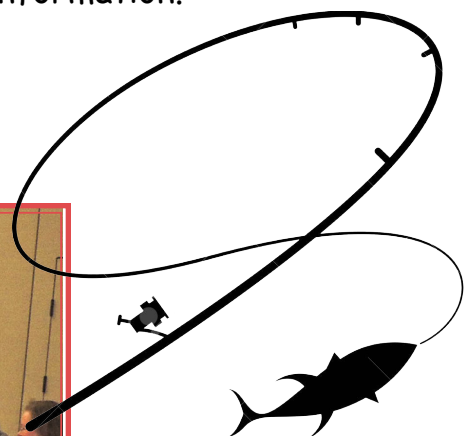
Please submit the Circle of Life (St Jude's) Booked Event Form and Completed Event for to ESA headquarters so your chapter will get credit for the events you have connected with St Jude's.

Also please have your Philanthropic Chairman send Connie Russell, cjrseattle@msn.com, 172 Val St, Sutherlin,OR 97479, a copy of the Philanthropic report so your chapter totals will be correct for State Convention.

Please contact me if you have questions or concerns.

Thanks Julie, let me know if you need any additional information.

Thank you,  
Connie Russell



Easter Seals  
Game Night  
Winners!



## WORKSHOP

### From your Workshop Coordinator

We had a great Winter Meeting in Lebanon, Oregon, I had asked Lizz Duhn to come and tell us about her journey with her illness.

Lizz did a great job and we were so impressed with her story and what she was able to do after she was cancer free, Even though she was to take it easy, she did not let anything stop her. Hope everyone enjoyed hearing her story,

Looking forward to State Convention in April.

Take care and see everyone soon.

Barb Moss, Workshop Chair.



Lizz Duhn and Barbara Moss



### From your Hope for Heroes Chair

Hey, all you Oregon ESA members, here is your opportunity to help support our deployed soldiers. Bring items to convention to send to our soldiers. Alpha Zeta will take them, pack them up, and send them on to our awesome troops. I am asking that all

participants also chip in \$1.00 each to help with shipping. Here is a short list of acceptable items, for a complete list of permissible items go online to [military.com](http://military.com).

Short list: plastic zipper bags of popcorn, we will use these for packing material, powdered drink mixes, tea bags, small packages condiments, ramen, candy, gum, energy bars, tuna, sardines, any jerky or meat sticks must be labels USDA BEEF, snack chips, cookies, cheese crackers, nuts, packaged snack cakes, books, magazines, passel books, extra ziplock baggies if you are sending larger bags.

Do Not Send: perishable, chocolate, candy that melts, anything that would be offensive to the native community.

**Please don't forget to email in your year-end "Hope for Heros" report before April 1st.**

Hope For Heroes

Linda Howes - [howeshome@comcast.net](mailto:howeshome@comcast.net)





Guest speaker Anne O'Mallery gave a very informative and fun powerpoint presentation about today's Easter Seals and where they are going.



Bios on Neena and Anne:

After 25 years of working in a variety of positions for nonprofits, Neena Nuhring joined the strategies & affairs team. She manages all clients' social media platforms,

conducts grant research, and heads up most fundraising events.

Anne has been working with nonprofits on legal issues for 20 years and has been running strategies & affairs for 11 offering a wide array of services for Oregon and Washington nonprofits.

Strategies & Affairs has proudly been writing grants for Easter Seals Oregon (and a couple other Easter Seals affiliates around the nation) since 2007 and has recently taken on more Easter Seals' activities; including caring for the ESA-ESO relationship and promoting both organizations.

They put on a fun games night on Saturday which also raised money for Easter Seals.



Building  
Falling down!



Working together to accomplish a common goal, moving M&M's from one plate to another with straws.



Having a good time while throwing candy.





From your Association of the Arts Chair

Oregon State Council
2017-2018

ASSOCIATION OF THE ARTS

ENTRY FORM

Association of the Arts Chair

Darlene Hoffman
2384 NW Fir Lane Madras, OR 97741
grandmahoffy@yahoo.com

This form must accompany all entries including Literature and Music.
The deadline for all entries is April 1.

All entries, other than Literature and Music, are to be brought to the display room on Friday of State Convention by 7:00 pm.

All entries are to be picked up before leaving Convention. Those not picked up will be returned at the artist's expense.

Artist's Name \_\_\_\_\_ Phone \_\_\_\_\_

Address \_\_\_\_\_

Chapter Name \_\_\_\_\_ Number \_\_\_\_\_ City \_\_\_\_\_

Division I - Quilts

- \_\_\_ Beginning
\_\_\_ Intermediate
\_\_\_ Master Quilter (3 or more previous wins)
# of Entries in the category \_\_\_\_\_

Division IV - Photography (matted & framed)

- \_\_\_ Black & White or Color Photos
\_\_\_ Graphic Design
\_\_\_ Computer Assisted Design
# of Entries in the category \_\_\_\_\_

Division II - Needlework

- \_\_\_ Crewel
\_\_\_ Embroidery
\_\_\_ Counted Cross Stitch
\_\_\_ Needlepoint
\_\_\_ Crocheting
\_\_\_ Silk Ribbon
\_\_\_ Other \_\_\_\_\_
# of Entries in the category \_\_\_\_\_

Division V - Crafts

- \_\_\_ Pottery and Sculpture
\_\_\_ Drawing, Pastels or Charcoal
\_\_\_ Basket Weaving
\_\_\_ Jewelry
\_\_\_ Rubber Stamping
\_\_\_ Decoupage
\_\_\_ Glass
\_\_\_ Wood
\_\_\_ Other \_\_\_\_\_
# of Entries in the category \_\_\_\_\_

Division III - Painting

- \_\_\_ Tole Painting
\_\_\_ Painted Pottery
\_\_\_ China Painting
\_\_\_ Oil Painting
\_\_\_ Watercolors
# of Entries in the category \_\_\_\_\_

Division VI - Literature/Music

- \_\_\_ Poetry
\_\_\_ Short Story or Essay (500 words or less)
\_\_\_ Music
# of Entries in the category \_\_\_\_\_

## From Your Winter Meeting Chair

Here is the final Winter Meeting Report. Any questions, please call me.

Thanks

Linda Brown, Winter Meeting Chair

### Winter Meeting Budget Report Feb. 17th/18th 2018 Boulder Falls, Lebanon

#### Deposits

49 registrations @ \$65	\$3185.00
7 registrations @ \$75	525.00
	<u>\$3710.00</u>

#### Expenses

\$725.00	building
1023.18	lunch 58 X \$14.95 includes 18% tip
1365.38	dinner 58 X \$19.95 includes tip
<u>29.50</u>	coffee service includes tip
\$3143.06	to Boulder Falls
\$455.00	to 7 canceled members
79.09	folders, center pieces, printing, games, postage
<u>00.00</u>	president's room, Jill went home each night
\$3677.15	

\$3710.00	
<u>-3677.15</u>	
\$ 32.85	to State Treasurer

Signed Linda Brown-Winter Meeting chair  
Feb. 24th



Group picture of all who attended Western States Meeting in Baja, Mexico.

## From your Western States Representative



Hooked on ESA



IC President Sandy Alexander presenting Judy Huntley with a homemade certificate for 35 years of service.



## CHAPTER AFFAIRS

### ALPHA LAMBDA CHAPTER NEWS



We are still grieving the loss of our beloved Marjorie Peterson. She was our rock and she will always be in our hearts.

It looks like we have a lot of catching up to do. We missed the December publication. Our President, Diane Yarrish is guiding us through 2017/18. We did the Easter Seals dances for October, November and December. We do enjoy participating. The attendees are great and they love the munchies we bring for them. Since Christmas some of our gals have had bronchitis, pneumonia, etc., fortunately not too much flu. But, we are all on the mend.

Our Educationals, "Gone Fishing for ESA" are very interesting. We have covered the history of ESA, City of Medford, Jackson County, and Oregon history. We are to invite guests and hopefully we will hook some of them and catch some new members.

Our Socials are also important. Before Christmas we attended "Hello Dolly" at the Camelot Theater. The week before Christmas we took a City Lights Bus Tour provided by the City of Medford. Very nice, sit back, enjoy and leave the driving up to them..

February has been busy after a lull in January. On February 13th we had a Valentine's luncheon at Olive Garden. The St. Jude Radiothon with Q100.3 radio station was held on February 22-23. As in previous years, the Radiothon totals surpassed the previous year. All for the kids at St. Jude.

Our President is now on a motor home trip to Arizona and Pam and Roger Smith are getting ready to leave for Texas in their motor home. The rest of us will hold down the fort.

The Southern District Spring Meeting, "Go Green" will be held on Saturday, March 17th at Elmer's in Grants Pass. Gamma Beta are hosting this meeting. We will have lunch, Outstanding Member recognition, Disaster Fund donation, and the Spring meeting.

That pretty much sums it up. We are working on our reports, looking forward to Convention and Alpha Lambda/Gamma Beta Founder's Day in June.

Natalie Lastiwka

pltl@aol.com



Having fun at Winter Meeting!





## ALPHA ZETA

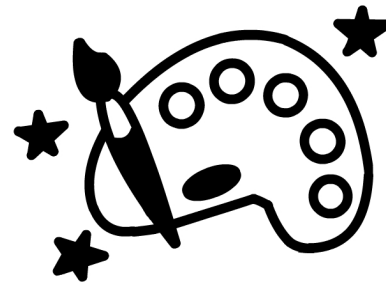
Alpha Zeta continues to help at Bags of Love once a month. We always have something different to do each time we appear. The increase in bags needed was 24% more this year than last already. This keeps everyone busy making bags, filling bags, sorting clothing, toiletries, school supplies and toys. We always meet for brunch prior to heading over to BOL so that we are well fortified.

We are having another Paint and Pour on March 17, 2018 at Songbrook Park. This time the monies earned will go to Easter Seals. The attendees provide potluck appetizers and/or wine. Non-alcoholic beverages will be provided by Alpha Zeta. If you haven't participated in this artistic endeavor, think about attending. If not this one, then another. It is a lot of fun and the paintings turn out well. This is usually to everyone's surprise. The wine helps!!

We will be visiting Newell House which houses, among other things, the Inaugural dresses of Oregon's First Ladies. This will be in conjunction with our Rivers' educational which on this occasion will be the Willamette River.

We welcomed Jayne Merz into our midst. She finally made the move from Washington to Oregon and we are delighted to have her. She will make a very nice addition to our group.

Submitted by Lani Shimer, Publicity for Alpha Zeta



## DELTA KAPPA

Our second quarter is busy already. To bring you up to date, Our Hope for Heroes Carnival at the Veterans Hospital in The Dalles was a Big Hit with the residents. They went to various carnival booths assisted by the nursing staff. Everyone won prizes of snacks, cake, cookies, root beer floats & they got to choose items from a table filled with: socks, calendars, pens, puzzles, hats, slippers, patriotic magnets to take back to their room. The photo booth was the biggest treat for the residents. They enjoyed putting on hats, mustaches, funny faces to take pictures of value for the families. Their ages ran from 65 to 100 yrs of age. ESA in motion for our Heroes. All had a Ball. This event will be considered again next year.

Our Business Meeting for January was held at Debbie's home. Our Ways and Means chairmen Penny told us the Spring Fling Bingo Party will be April 7th, 2018 at the Hood River Inn. Flyer will be on the website soon. Our gift wrap at Walmart was a success and everyone had a story to share about their gift wrapping experience. Customers are fussy and funny, but very giving.

Scholarships for the High School and College are up and coming. We reviewed our Guidelines and brought them up to date. Will choose our candidates in March for the High School and June for the College.

Easter Seals "Frost A Cake" will start February 1st and run for ten days. Residents of Hood River are very giving and our cakes are removed daily and a fresh cake is placed. On this event we wash coins & dollars daily to make upwards of \$600.00. Rosauer's Market donates all the cakes. We are so lucky.

Our Social was at Divots, which we all know and love. Two new ladies attended that may be coming into our chapter. We gave our booklet on ESA and Delta Kappa to them. All had fun.





## ALPHA UPSILON

### Best Feathered Friends

#### ALPHA UPSILON CELEBRATES 65 YEARS

Alpha Upsilon, Hillsboro Chapter of Epsilon Sigma Alpha, International Philanthropic Organization, celebrates 65 years of philanthropy.

The group was organized when a small group of women gathered socially and wanted to contribute to the community. Their purpose was to provide education to the members and service to their community, which the members still do to this day. Alpha Upsilon was chartered in 1952. For many years AU was recognized by The Hillsboro Chamber of Commerce as Hillsboro's Outstanding Woman's Organization of the Year. Many women of the organization also were also recognized as Women of the Year.

Over the years, the members of Alpha Upsilon have held a wide range of fundraisers to support a variety of community projects. In the 60's, AU became supporters of Eastern Seals, the ESA State project, and then in the 70's, took on fundraising for St. Jude Children Research Hospital, the International Project of ESA.

In the 70's, AU started with \$80 to establish scholarships at Hillsboro High School. At that time Hill High was the only high school in the Hillsboro School District. Greg Kaufman, the first recipient of our scholarship, many times commented, if it hadn't been for our Scholarship, he would have never been able to go to college and eventually end up in Maui where he established the Pacific Whale Foundation. Sadly, Greg passed away this past February from brain cancer.

The Scholarship Program has grown and today includes all High Schools in the Hillsboro School District. All graduating seniors who have overcome physical, learning, and/or emotional obstacles, with potential for furthering their education, may apply for this scholarship.

In the 80's and 90's, Reno Parties and Dinner Auctions were major fundraisers held at the Hillsboro Tuality Health Education Center. Today our fundraising continues with auctions, yard sales, scrip program, and personal donations.

Through our endeavors and involvement in our community, AU continues to provide the opportunity for women to be of service to our community. Members continue to raise money for philanthropic needs such as Families in Need, Home-plate, Students in Career Development, Veterans and Military Families, Cancer Support Groups, Memory Care Facilities and more. We continue to support The State and International projects, Eastern Seals and St Jude Children Research Hospital.

Now in 2018 we look back and see, three Past State Presidents:: Claudia Hale, Marlene Nash, and Sandi Kucera, leaders throughout on both District and State and International levels. We

celebrate Claudia, Marlene, Jo Thomas each with 50 years of service and all the Alpha Upsilon Women who will follow in their footsteps.

Congratulations Women of Epsilon Sigma Alpha, Alpha Upsilon

WE WILL CONTINUE TO GROW TO

"BE OF SERVICE"

Pearl Lushina



American Pipit



## Delta Gamma

January and February were busy planning months for Delta Gamma. Members were faced with selecting a new Auction venue for the coming year and we are happy to announce we found very suitable accommodations for our October 27, 2018 auction. More information will be forthcoming as the auction date gets closer.

Our Chapter has been busily supporting other projects in our community. The Project Graduation bottle drive was well supported by our group. Some of us also attended the fundraiser for Project Graduation at Mo's where a portion of the price of fish and chips was donated.

One of our favorite charities in town is Crow. Crow is an organization devoted to the artistic growth of young people in our community. They sing, they dance, and they perform! Delta Gamma had a table at their Black and White Ball fundraiser on Feb. 17. All attending thoroughly enjoyed the evening.

Delta Gamma has also been working with the local hospital to start

a fund for patients who cannot afford medications they need. Although somewhat complex in the administration, we hope to wrap up the pilot project soon and begin a voucher program that will initially focus on the Emergency Department. Once the program is stable and functioning well, we plan to partner with other community philanthropic groups to participate in this project for the underserved.

We always make time to help our Sisters who are having medical procedures or surgery. Taking meals, assisting with transportation, or just visiting is always appreciated.

Sue Scarberry, Vice President/Publicity

# Save the Date

## 31<sup>st</sup> Charity Auction

“Making a Difference in Our Hometown”

### Saturday, October 27<sup>th</sup>

---

For information contact Julie  
call 541-991-7906 or e-mail [BizzMail@msn.com](mailto:BizzMail@msn.com)









## DELTA XI HAPPENINGS

### HAPPY 60TH BIRTHDAY DELTA XI

In January Delta Xi celebrated their 60th birthday with song,



champagne, cookies and cupcakes. Where have the years gone? I don't think our members have slowed down with all of our fundraising, charity work and just plain fun. Way to go Delta Xi. (Several members not shown)

Independent Living Resource held their annual Christmas Party in December. We brought

cakes, pies and cookies to add to their wonderful luncheon. We also helped serve and assist in whatever was needed. It is always nice to see them enjoying the celebration considering all the challenges they face. Inspiration to all.

We had such a good time at our Christmas Party. Gifts were opened from our Secret Sisters and we found out just who had gifted us throughout the past year. Of course lots of great food and lots of great cheer!

We served lunch to approximately 35 at the HIV Day Center. Visiting with the clients is important and a way for all to learn about lives maybe different from ours. In January and February we made a dinner for the men at Clark Center. In March we will be fixing a meal for the women at Jean's Place.

Our "Hope for Heroes" coupon collection is going strong. We are going to assist Easter Seals in donating items "kits" for the Vets. Easter Seals will be holding their Bloomfest the last week of March. We will be selling tulips at Providence Hospital.

Nine of our members attended Winter Meeting in Lebanon. We had a lot of fun playing all the Easter Seal games even though they disqualified us for cheating. We called it being creative! It was so nice seeing members from all over Oregon and even some from Washington. Looking forward to State Convention.

We held our Auction/Dinner March 24th. The taco bar was enjoyed and the auction was a success. It was a lot of work but in the end very worthwhile.

Sad to say we have lost a long-time ESA member, Shirley Marcy, a past member of Delta Xi and member of Delta Phi. She was a very knowledgeable lady and had a wonderful sense of humor. Shirley was a nurse during World War II and was honored in Washington DC.

Spring is almost here and hopefully no more snow.

Submitted by Andrea Storm

## DISTRICT AFFAIRS

### WILLAMETTE VALLEY DISTRICT COUNCIL



What to our wondering eyes should appear, but - not Santa - snow. We all awoke Sunday morning to snow on the ground!! Much discussion was had whether it would stick and make the trip home a little scary or if it would switch to rain and melt the snow.

Our fears were not realized and when we met for WVDC, all the snow was gone, and a bride raced across the courtyard. Seriously!

Our meeting went off without a hitch with many decisions made - we have a slate of officers for the next two years. This slate will be voted on at next district meeting. The candidates are:

President - Su McDonell

Vice President - Joy Serkowney

Treasurer - Sandi Bristow

Secretary - Patty Anderson

Parliamentarian - Linda Brown

Chaplain - Lani Shimer

Outstanding Member Recognition - Madison Headley

I notice that we forgot to find someone to do publicity. Anyone?

Looks like Alpha Zeta and Omega Mu will be running the show.

Also, discussed were plans for the 2019 Convention which will be Nancy Reid's convention. Alpha Zeta will be hosting the mixer and I don't have the rest of the hostesses as I gave my worksheet to Our Esteemed President, Jill Rankin. Everyone was given things to think about prior to our next meeting.

Our philanthropic project for this year will be the Delta Gamma Medication Project. It is a stop-gap program for those individuals who can't afford their medication.

Delta Gamma will be holding their annual auction on October 27. The site is TBD.

Our next district meeting will be in Waldport on June 9, 2018 hosted by Epsilon Theta. Hope to see you there.

Submitted by Lani Shimer, Publicity - February 18, 2018

### CENTRAL DISTRICT COUNCIL

Alpha Omicron will host Central District Council Meeting on March 17th, on St. Paddy's Day. Drinkin' and Eaten' at the greens. Lutheran Good Shepherd Church is at 395 SE "C" Street, Madras. RSVP March 12th. Call 541-475-2634. The meeting will begin at 11:30.

Get Hooked on ESA at Eagle Crest Resort on April 20-22, 2018. We're hoping to have a great State Convention at a beautiful resort. Room reservations are to be made by Melanie Swann. Call 1-877-790-6271. Cut off reservations are to be 3/16/2018.

We need to know the meals for the banquet. Coq au vin and pork loin are the choices. YUM!

We look forward to seeing you.

Judy Johnson, Central District Council



## Oregon State Council 2017-2018

### OUTSTANDING MEMBER RECOGNITION

Requirements: Each chapter may submit one member of its choice for Outstanding ESA Member Recognition. ONLY Outstanding Members in attendance at the annual Oregon State Council Convention in April will be recognized and honored at Convention.

The method used to select each Outstanding Member will be at the discretion of the individual chapters.

If the name of your chapter's Outstanding Member is to be a surprise... please indicate that when sending in their name.

#### Requirements for Outstanding Member to be honored at State Convention:

- ESA member's name must be submitted by her chapter.
- The member's Name, Chapter name, number... City, State and year must be included in the entry.
- In two or three sentences tell why your chapter feels this member is outstanding. (please be brief)
- Information must be sent via mail by April 1, 2013 to: State Outstanding Member Chair Carolyn Warren 1202 NW Keasey St, Roseburg OR 97471 541-207-8064 [tcjarap@charter.net](mailto:tcjarap@charter.net)
- Each Chapter submitting a name for Outstanding Member Recognition must send \$5.00 with its entry to the State Outstanding Member Chair.
- Failure to meet the above requirements may result in the Outstanding Member not being recognized at the Oregon State Convention.

Remember, please... This is a ceremony to recognize each Chapter's Outstanding Member It is NOT a contest to be judged.

Send this in TODAY ... Please!

**GET HOOKED ON ESA  
EAGLE CREST RESORT**

1522 Cline Falls Road, Redmond, Oregon 97756

**2018 OREGON STATE CONVENTION**

**APRIL 20-22, 2018**

**REGISTRATION \$135**

**ROOM RESERVATIONS CALL: 1-877-790-6271**

**BE SURE TO MENTION ESA FOR THESE RATES**

**DOUBLE QUEEN ROOM \$119 / 1 BEDROOM SUITE \$139**

**2 BEDROOM CONDO \$219 / 3 BEDROOM CONDO \$269**

**CUTOFF DATE 3/16/2018 FOR RESERVATIONS**

**(SUBJECT TO STATE & LOCAL TAX AND FEES)**

**REGISTRATION INCLUDES:**

**LUNCH AND DINNER ON SATURDAY AND BRUNCH ON SUNDAY**

Members Name \_\_\_\_\_

Address \_\_\_\_\_

Phone Number \_\_\_\_\_

Chapter Name & Number \_\_\_\_\_

Pork Loin or Coq Au Vin \_\_\_\_\_

Board Member \_\_\_\_\_ Gavel \_\_\_\_\_ Guest \_\_\_\_\_

Make checks out to Oregon Central District

Mail Registration to:

Epsilon Sigma Alpha, PO Box 922, Burns, OR 97720

Call Melanie at 541-589-1857 or

email [swann.m@hotmail.com](mailto:swann.m@hotmail.com) with questions.



## Calendar of Events

April 1, 2018 -

- Year-end reports due
- Assoc. of the Arts entry form
- Outstanding Chapter Report
- Philanthropic Report
- Distinguished Athenian Service Award & Educational Report
- Service & Chapter Anniversary Pins
- Disaster Fund Donations
- Outstanding Member Recognition
- Easter Seal Sr. Chair

April 20-22, 2018 - Oregon State Convention, Eagle Crest, Redmond, OR

June 1, 2018 - Grapevine Deadline

July 15-22, 2018 - IC Convention, Sheraton Grand Hotel, Phoenix, AZ

September 1, 2018 - Grapevine Deadline



### 2018 IC Convention "Sunshine and Celebrations" Phoenix, Arizona

Do you enjoy a good party? Do you love to share time with friends? Then we have just the place for you!

Plan now to attend the 2018 IC Convention in Phoenix, Arizona on July 18-22, 2018. The Arizona and California Councils are working hard to make sure there is a great celebration while you are there.

The registration forms are attached to this newsletter as well as the tour registration form. Come early or stay late and see some of the area. There are train rides and museums and casinos and great food.

We will meet at the Sheraton Grand Hotel in Phoenix. All the meetings are just an elevator ride from your room. The room block is open and the rates are \$139 single or double and \$149 triple or quad.

Tell your friends and join us as we enjoy a great week together in Arizona. We can't wait to see you!

Sherry Day  
Local Convention Chair

Rickie Brown  
Local Convention Co-Chair



EPSILON SIGMA ALPHA

2018 INTERNATIONAL CONVENTION
'SUNSHINE AND CELEBRATIONS'
JULY 18-22, 2018
SHERATON GRAND HOTEL
340 N. 3RD STREET • PHOENIX, AZ 85004
602-262-2500 (local) • 866-837-4213 (reservations)



MEMBER NAME \_\_\_\_\_ MEMBER NUMBER/STATE \_\_\_\_\_ / \_\_\_\_\_
ADDRESS \_\_\_\_\_
CITY, STATE, ZIP \_\_\_\_\_
PHONE \_\_\_\_\_ CELL \_\_\_\_\_ EMAIL \_\_\_\_\_
CHAPTER NAME \_\_\_\_\_ CHAPTER # \_\_\_\_\_ STATE COUNCIL \_\_\_\_\_
DATE OF ARRIVAL \_\_\_\_\_ TIME OF ARRIVAL \_\_\_\_\_ FLY/DRIVE USING SCOOTER Y/N
ROOMMATE(S) \_\_\_\_\_

CHECK ALL THAT APPLY

- First IC Convention Pledge Collegiate Member - Campus HQ Staff
ESA Foundation Board IC Elected/Appointed Board Past IC President (year)
2017-2018 State President - State 2018-2019 State President - State
Previous State President - State(s)/Year(s) Served with:
I will be recognized at convention for my years of ESA Service: 25 30 35 40 45 50 55 60 65 70
Medical Food Allergy: The hotel will do its best to accommodate MEDICAL Food Allergy requests only.
Allergy alert for (Additional costs may apply.)

Table with 2 columns: Fee Description and Circle Amount. Rows include Member Full Registration Fee, Member Fri & Sat Registration Fee, Members Sat Registration Fee, Member Walk-in Registration Fee, and PICP No-Host Luncheon.

CONVENTION HOTEL ROOM RATES

Room rates: Single/Double - \$139, plus tax. Triple/Quad - \$149, plus tax
Rates are available for July 12, 2018 thru July 25, 2018 -

To receive the group rate, you MUST make reservations by June 29, 2018. Call for reservations and reference the Epsilon Sigma Alpha International 2018 Convention rate or click on the following: hotel link



Member Name and Number as listed on first page \_\_\_\_\_

**MEMBER MAY NOT REGISTER AS NON-MEMBER FOR ANY EVENT**

NON-MEMBER NAME \_\_\_\_\_

Please indicate if special guest of the following:  ALSAC  EASTER SEALS

INCOMING IC PRESIDENT  OTHER (Please specify) \_\_\_\_\_

	<u>CIRCLE AMOUNT</u>
<b>NON-MEMBER FULL REGISTRATION FEE</b>	<input type="checkbox"/> Postmarked by May 1, 2018.....\$250
Includes general assemblies, workshops,	<input type="checkbox"/> Postmarked May 2 - June 1, 2018.....\$275
welcome party, recognition luncheon and banquet	<input type="checkbox"/> After June 1, 2018 (see payment note below) .....\$275
<b>NON-MEMBER attending WELCOME PARTY</b>	<input type="checkbox"/> Postmarked by June 1, 2018 ..... \$ 65
	<input type="checkbox"/> After June 1, 2018 (see payment note below) ..... \$ 70
<b>NON-MEMBER attending RECOGNITION LUNCHEON</b>	<input type="checkbox"/> Postmarked by June 1, 2018 ..... \$ 50
	<input type="checkbox"/> After June 1, 2018 (see payment note below) ..... \$ 55
<b>NON-MEMBER attending BANQUET</b>	<input type="checkbox"/> Postmarked by June 1, 2018 ..... \$ 80
	<input type="checkbox"/> After June 1, 2018 (see payment note below) ..... \$ 85
<b>YOUTH REGISTRATION FEE</b>	<input type="checkbox"/> Postmarked May 1, 2018.....\$250
Includes general assemblies, welcome party	<input type="checkbox"/> Postmarked May 2 - June 1, 2018.....\$275
recognition luncheon and banquet	<input type="checkbox"/> After June 1, 2018 (see payment note below) .....\$275

\*\*\*List food allergies for non-members on page one, indicating who has the allergy.

**SUBTOTAL NON-MEMBER REGISTRATION:** \_\_\_\_\_

**ENTER TOTAL FROM FIRST PAGE:** \_\_\_\_\_

**TOTAL REGISTRATION:** \_\_\_\_\_

**MEN'S GOLF . . . Indicate days you would like to play golf.**

I wish to golf:  Monday  Tuesday  Wednesday  Thursday  Friday  Saturday

**SELECT ONE PAYMENT TYPE**

**REGISTRATION IS NON-TRANSFERABLE**

**\*\* PAYMENT NOTE:** Payment after June 1, 2018 must be paid by MONEY ORDER, CERTIFIED CHECK, CASH OR CREDIT CARD AND MAILED TO THE IC REGISTRATION CHAIR BEFORE JUNE 18, 2018. After June 18, 2018, mail registration form only - **DO NOT SEND PAYMENT.** Email the registration chair that the form has been mailed and bring copy of registration form with money order, certified check, cash or credit card to the IC Convention.

Check  Money Order Make payable to: **ESA 2018 IC Convention**  
A \$45 fee will be assessed for any returned check.

Credit card\*\*  Visa  MasterCard  American Express  Discover  
\*\*A fee of 4.5% of the total charge will be added.

Credit Card #                      Exp. date \_\_\_\_\_ security code \_\_\_\_\_

Name EXACTLY as it appears on credit card \_\_\_\_\_

Billing address of credit card holder \_\_\_\_\_

Cardholder Signature (required) \_\_\_\_\_

**CANCELLATION:** If you find it necessary to cancel this registration, the full amount less a \$15 processing fee will be refunded when WRITTEN cancellation is postmarked NO LATER THAN JUNE 15, 2018. NO REFUNDS AFTER JUNE 15.

**Mail registration form and payment to:** Marilee Dunn, 2018 ESA IC Registration Chair  
3575-1 Lehigh Drive; Santa Clara, CA 95051  
408-838-5254 email: Eureka5255@aol.com





## Tours for 2018 IC Convention



Mark the appropriate space(s) and indicate the number of tickets you want to order.

Please include tour registration with convention registration and payment.

**\*\*\*All tours include round-trip transportation\*\*\***

**Sunday July 15, 8:00 am – 4:00 pm** - Registration deadline – June 1, 2018

### Jerome and Lunch at the Asylum

Depart the Sheraton at 8am and travel to the Verde Valley. Experience a destination rich in history, beauty, and the production of exquisite Arizona wines. Stop in Cottonwood for shopping on your own in the historical downtown and a wine-tasting at Fire Mountain. Continue to Jerome. Recently voted as one of "America's Coolest Small Towns" by BudgetTravel.com. Jerome is a historic mining town built in the side of Mingus Mountain that was abandon but has come back to life. Lunch is included at the Asylum. Return to the Sheraton around 4pm.

\_\_\_\_\_ Tickets at \$110.00 per person = \$\_\_\_\_\_

\*\*\*\*\*

**Sunday July 15, 9:30 am – 3:30 pm** - Registration deadline – June 1, 2018

### Butterfly Museum and Talking Stick Casino

Depart the Sheraton at 9:30am and travel to the Butterfly Museum where over 3,000 friendly butterflies await your arrival. It the largest indoor butterfly pavilion in America. Around 12:30pm continue to Be Talking Stick Resort and Casino for lunch on your own. The culinary experts at Talking Stick Resort have created six unique restaurants for you to enjoy throughout the hotel and resort. Then there will be time to flirt with lady luck before returning to the Sheraton around 3:30pm.

\_\_\_\_\_ Tickets at \$89.00 per person = \$\_\_\_\_\_

\*\*\*\*\*

**Monday July 16, 8:30 am – 8:00 pm** - Registration deadline – June 1, 2018

### Verde Canyon Railroad

Depart the Sheraton at 8:30am and travel to Clarksdale where you will board the Verde Canyon Railroad for a four hour diesel train journey to places only accessible by rail. See crimson cliffs, eagle nests, white water rapids, and abandoned gold mines. Return to the Sheraton around 8pm.

\_\_\_\_\_ Tickets at \$129.00 per person - coach class = \$\_\_\_\_\_

\_\_\_\_\_ Tickets at \$179.00 per person - first class = \$\_\_\_\_\_

\*\*\*\*\*



**Monday July 16, 10:00 am – 3:00 pm - Registration deadline – June 1, 2018**

**Classic (Historic) Homes**

Go back in time for a day and discover Arizona's rich history. Tour The Rossen House, a fully-restored 1895 Queen Anne Victorian house museum which interprets the history of Phoenix. Tours of the house include all living areas and offer visitors a glimpse into the lifestyles of early Phoenix families. Spend time at Heritage Square before driving by other historical Phoenix homes. These homes are striking reminders of the Valley's vibrant past Lunch is included at the Spicery in Glendale.

\_\_\_\_\_ Tickets at \$75.00 per person = \$\_\_\_\_\_

\*\*\*\*\*

**Tuesday July 17, 8:00 am – 5:00 pm - Registration deadline – June 1, 2018**

**Sedona and Montezuma Castle**

Depart the Sheraton at 8am and travel to Montezuma Castle National Monument. Gaze through the windows of the past into one of the best preserved cliff dwellings in North America. This 20 room high-rise apartment, nestled into a towering limestone cliff, tells a story of ingenuity, survival and ultimately, prosperity in an unforgiving desert landscape. Continue to Sedona for lunch and sightseeing on your own. Sedona is home to over 300 artists that draw from the quiet, colorful, and spectacular physical environment. The red rocks, drifting clouds, towering pinnacles, and sheer canyon walls lend incredible beauty to this area. Return to the Sheraton at about 5pm.

\_\_\_\_\_ Tickets at \$105.00 per person = \$\_\_\_\_\_

\*\*\*\*\*

**Tuesday July 17, 9:00 am – 2:00 pm - Registration deadline – June 1, 2018**

**Musical Instrument Museum (MIM)**

Depart the Sheraton at 9am. A guided tour of MIM features more than 6,000 instruments collected from around 200 of the world's countries and territories. Most displays are enhanced by state-of-the-art audio and video technologies that allow guests to see the instruments, hear their sounds, and observe them being played in their original contexts. Lunch is on your own in the MIM Café. Return to the Sheraton around 2pm.

\_\_\_\_\_ Tickets at \$65.00 per person = \$\_\_\_\_\_

\*\*\*\*\*

**Friday July 20, 6:00 – 10:00 - Registration deadline – June 1, 2018**

**Diamondbacks Baseball**

The Arizona Diamondbacks are at home and playing the Colorado Rockies. Ticket price includes all you can eat ball park food (hot dogs, popcorn, sodas and more). In sections with easy access and close to the bar and a little more leg room. Don't forget – Chase Field is air conditioned and just 3 blocks from the Sheraton Grand Hotel.

\_\_\_\_\_ Tickets at \$38.00 per person = \$\_\_\_\_\_

.....



**Friday July 20, 6:00 – 10:30** - Registration deadline – June 1, 2018

**Wildhorse Pass Casino**

Take the bus to Wildhorse Pass Hotel and Casino for a night of fun. There a slots and table games and great places to eat. See just how lucky you are! The bus will leave the hotel at 6:00 PM and return to the hotel about 10:30 PM.

\_\_\_\_\_ Tickets at \$24.00 per person = \$ \_\_\_\_\_

.....  
**Sunday July 22, 9:00 – 5:00** - Registration deadline – June 1, 2018

**Tucson – San Xavier del Bac Mission and the Presidio**

Depart the Sheraton at 9am and travel to Tucson. Upon arriving, tour the San Xavier del Bac Mission. A National Historic Landmark, San Xavier Mission was founded as a Catholic mission by Father Eusebio Kino in 1692. It is the oldest intact European structure in Arizona and is filled with marvelous original statuary and mural paintings. After lunch on your own, visit the Presidio San Agustín del Tucson Museum, a re-creation of the Tucson Presidio built in 1775. Travel back in time to learn about life as early Tucsonans would have lived it. Docent tours discuss life in the Santa Cruz Valley for early Native Americans, Presidio residents and Territorial Period settlers. See the archaeological remains of a pit house, walk along the original Presidio wall and experience a 150 year old classic Sonoran Row house. Return to the Sheraton around 5pm.

\_\_\_\_\_ Tickets at \$99.00 per person = \$ \_\_\_\_\_

.....  
**NOTE: Tours may be cancelled if minimum registration is not met.**

Registration deadline – June 1, 2018

**Name** \_\_\_\_\_

**State** \_\_\_\_\_

**Tour Total** \_\_\_\_\_ **If using debit/credit card, add 4.5%** \_\_\_\_\_

**Payment Instructions:** Include Tour Registration form with Convention Registration. For your convenience, you may remit one check, money order, or credit / debit payment for both.



